

FOR LEASE: 2,000-6,220 SF +/-

RETAIL/MEDICAL END CAP UNIT

Orange Center Plaza, 464 Boston Post Road, Orange, CT



COLONIAL PROPERTIES



PROPERTY INFORMATION

Lease Price: \$25/SF NNN

NNN's: \$5.50/SF

Available SF: 2,000-6,220 SF +/-

Parking Spaces: Ample

Occupancy: TBD

Zoning: C-2



DESCRIPTION

Excellent high visibility opportunity! 6,220 SF +/- (sub-dividable) of prime retail/medical space located on a very busy intersection of Route 1, with 25,200 cars per day. Unit is currently fitted out as a medical office. This Plaza offers prominent signage, ample parking and is convenient to I-95, Route 34 (Derby Ave) and Route 15 (Merritt Parkway).



200 Boston Post Road, Orange, CT 06477

Gary Bellard
gary.bellard@gmail.com
Cell: 203-795-3853
www.colprop.com



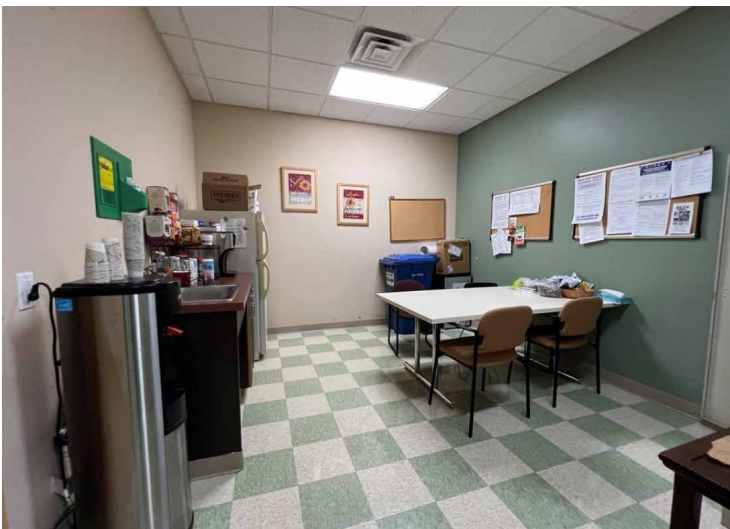
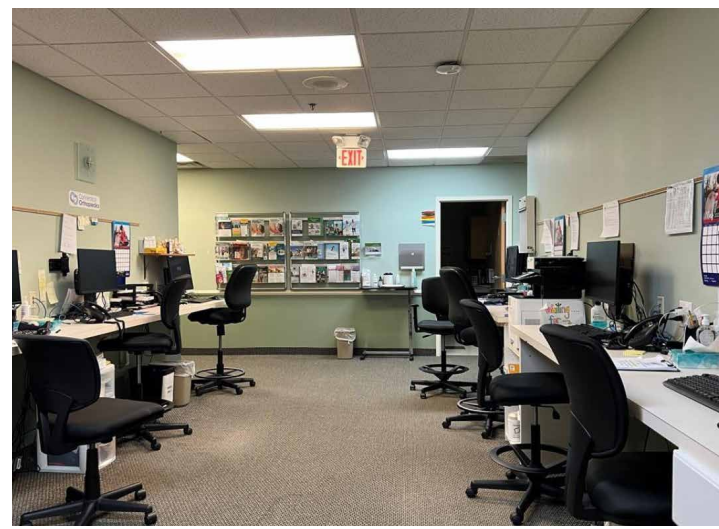
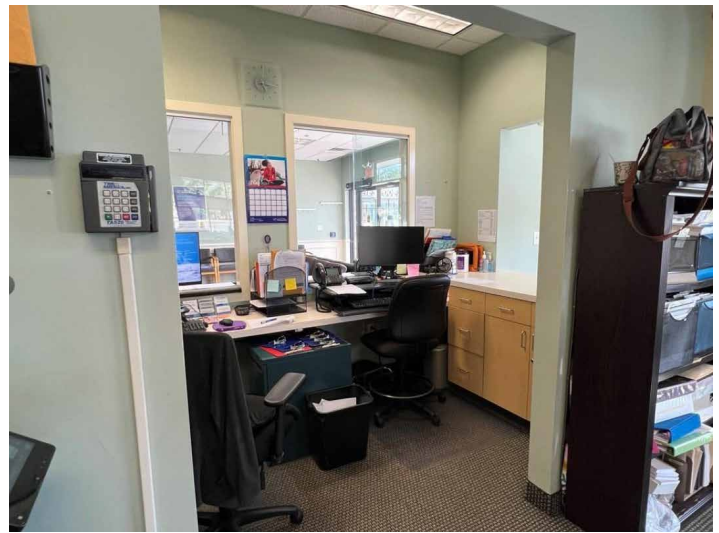
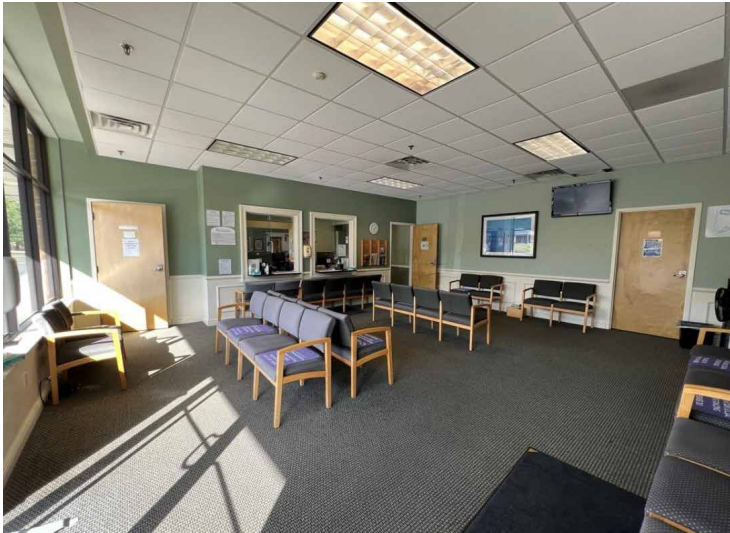
FOR LEASE: 2,000-6,220 SF +/-

RETAIL/MEDICAL END CAP UNIT

Orange Center Plaza, 464 Boston Post Road, Orange, CT



COLONIAL PROPERTIES



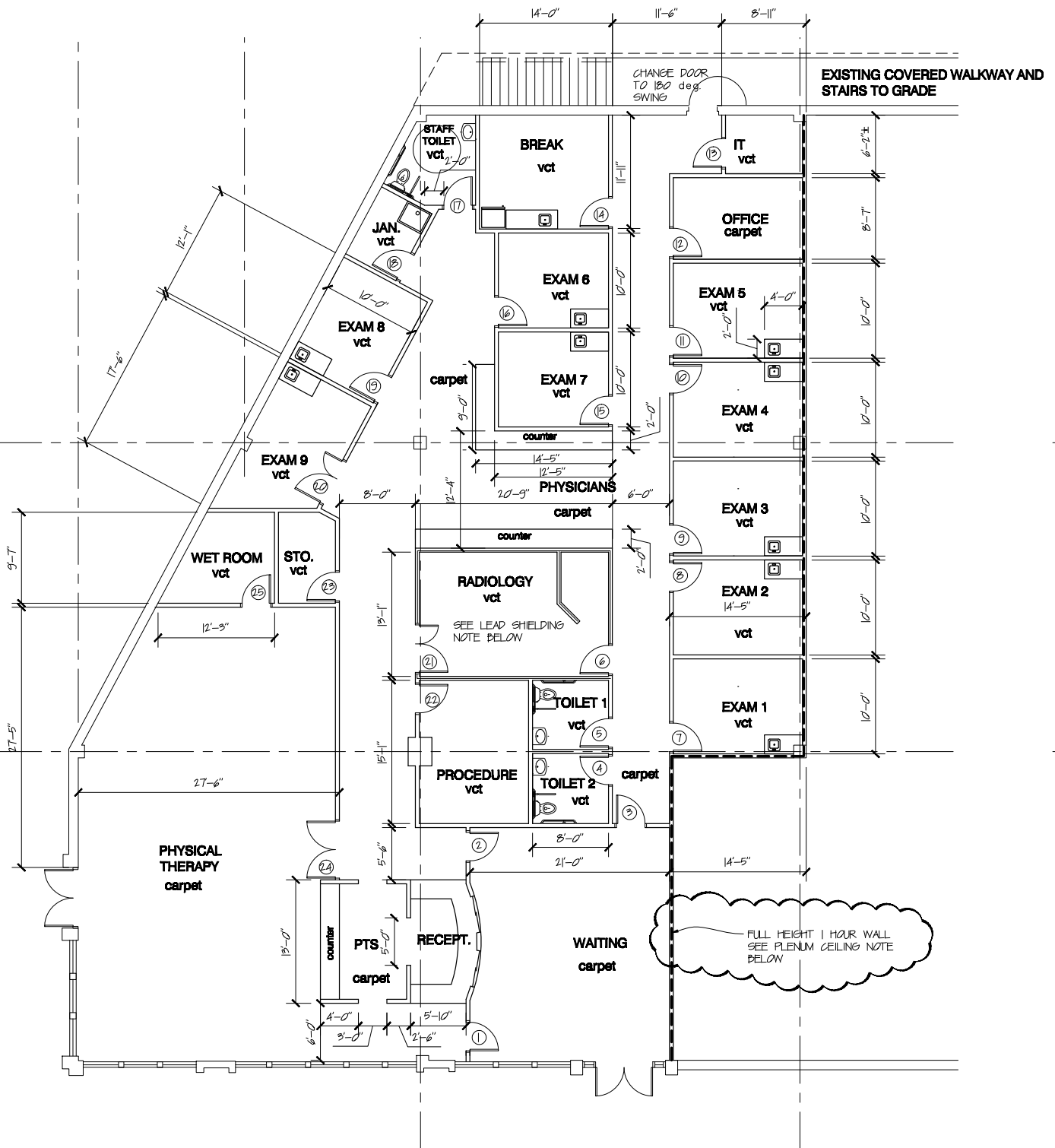
FOR LEASE: 2,000-6,220 SF +/-

RETAIL/MEDICAL END CAP UNIT

Orange Center Plaza, 464 Boston Post Road, Orange, CT



COLONIAL PROPERTIES



**FOR LEASE: 2,000-6,220 SF +/-
RETAIL/MEDICAL END CAP UNIT**
Orange Center Plaza, 464 Boston Post Road, Orange, CT



25,200 Cars Per Day on Route 1

DEMOGRAPHICS

	1 mi.	3 mi.	5 mi.
Population	3,358	61,789	167,007
Households	1,360	23,561	65,044
Avg. HH Income	\$96,167	\$90,167	\$82,139

Gary Bellard
gary.bellard@gmail.com
Cell: 203-795-3853
www.colprop.com

